

RT-qPCR for rapid *E. coli* detection in water enabling four-hour negative reporting

Announcing the introduction of Method MM336, a cutting-edge approach for the rapid detection and enumeration of *E. coli* in water using RT-qPCR technology. This innovative method helps significantly reduce traditional *E. coli* testing turnaround times – from a full day to just a few hours – enabling faster responses during contamination events. By helping minimise service disruptions, Method MM336 can enhance operational resilience and support water utilities in delivering safe, reliable water services with confidence.

PCR in modern water monitoring

Over the past decade, PCR adoption in water quality monitoring has accelerated, supported by increasing regulatory uptake and the formalisation of standardised methods and frameworks, such as ISO/TS 16099:2025, which defines general requirements for the application and validation of PCR-based methods across water matrices.

Within this framework, organism-specific methods have been developed to support targeted monitoring applications. Early regulatory uptake in the United States focused on qPCR-based detection of Enterococci through EPA Methods 1611 and 1609, establishing validated workflows and quality criteria for routine use. Internationally, standards such as ISO/TS 12869:2019 define performance requirements for *Legionella*, further embedding PCR within established water quality monitoring programs. More recently, EPA Draft Method C has extended these approaches to *E. coli*, applying similar principles of quality assurance and validation to support rapid detection.

The application of these methods has demonstrated clear operational benefits. In the United States, Draft Method C has enabled same-day quantification of *E. coli* at over 100

recreational sites, supporting faster public health responses and improved operational decision-making (Haugland et al. 2021). Similarly, multi-country validation under the EU Bathing Water Directive confirmed that real-time PCR can reduce detection times from one to two days to a few hours while meeting ISO validation requirements (Gomez Cortes et al. 2024; Gomez et al. 2025). Method MM336 is based on EPA Draft Method C, providing a validated framework tailored to local monitoring requirements in Australia.

Adapting to change in regulation

In Victoria, routine potable water monitoring for *Escherichia coli* (*E. coli*) is essential to verify that preventive measures such as disinfection and filtration are functioning effectively. Under the Safe Drinking Water Regulations (SDWR) and Australian Drinking Water Guidelines (ADWG), *E. coli* must not be detected in any 100 mL sample of drinking water (NHMRC & NRMCC 2011; NHMRC 2011). Any detection requires immediate investigation and corrective action.

Traditionally, compliance relies on culture-based methods, which typically take 18–27 hours to deliver results (figure 2). While suitable for routine monitoring, this timeframe is

inadequate during contamination events when rapid decision-making is critical. The need for rapid results has grown significantly since false-positive allowances were removed under the SDWR, meaning any *E. coli* detection is now treated as a regulatory breach.

A rapid, sensitive molecular workflow

Method MM336 reduces turnaround time to approximately 4 hours, enabling faster public health responses during contamination events and helping minimise operational risk.

The new PCR method from ALS combines two *E. coli* markers with proven sensitivity and specificity, supported by extensive research. EC16S, first described by Huijsdens et al. (2002), offers broad inclusivity, while EC23S857 – validated under U.S. EPA Draft Method C (Sivaganesan et al. 2019) and widely adopted for regulatory applications – delivers superior sensitivity and quantitative performance.

Together, these markers provide complementary strengths, forming the basis of a dual-target strategy that helps reduce false negatives and build confidence in results. This approach is integrated into a PCR workflow aligned with international best-practice principles for molecular water testing, helping ensure reliable detection across diverse water matrices.

Key benefits offered

- Rapid confirmation of results to inform mobilisation requirements
- Fast response during contamination investigations and incidents
- Reduced costly delays and improved public health protection
- Fast reporting to the Victorian Department of Health.

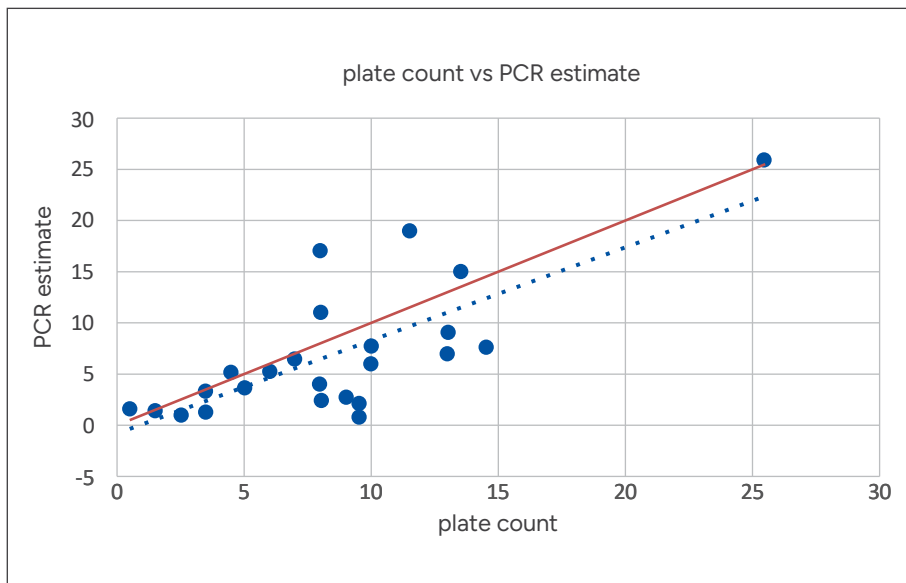


FIGURE 1. Correlation between plate counts and PCR estimates for *E. coli* in spiked samples.

Specifications

Table 1: Method specifications

Method code	MM336
Analytes	Potable and other water matrices
Sample volume	1 L minimum
Holding time	26 hours
Turn around time	~4 hours
Limit of reporting	Estimated cfu/100 mL
Reporting format	Qualitative and quantitative

Verification outcomes

Comprehensive verification studies have shown that Method MM336 delivers high sensitivity, strong specificity, and consistent reliability in potable water.

These findings support the use of the method alongside culture-based enumeration for *E. coli* monitoring.

Sensitivity and specificity

PCR results demonstrated strong concordance with plate culture, with sensitivity and specificity both exceeding 95% (table 2), meeting internationally recognised performance criteria for qPCR. Estimated counts from PCR showed a strong and statistically significant correlation with plate culture counts in spiked samples (Pearson’s $r = 0.744$; figure 1), indicating that the method can provide meaningful estimates of colony forming units (cfu), in addition to detecting *E. coli* contamination. The method achieved 100% negative predictive value, supporting a high level of confidence in negative results.

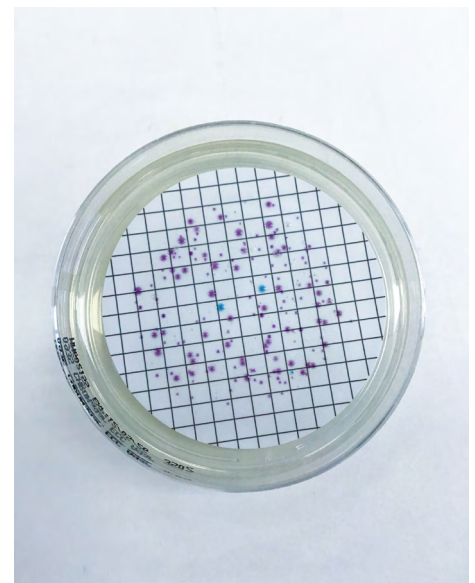


FIGURE 2. Colony development on chromogenic agar after 18–24 hours incubation. Putative *E. coli* (blue), coliform (purple) and non-coliform colonies (cream) are visible.

TABLE 2. Sensitivity and specificity of method MM336 (PCR), calculated against method MM698 (culture), for 44 potable water samples (positives spiked).

Metric	Sample type (n)	Concordance	95% CI	Counts (TP/FN/FP/TN)
Sensitivity	Culture positive (24)	100%	85.8%-100%	24/0/-/-
Specificity	Culture negative (20)	95%*	75.1%-99.9%	-/-/1/19*

*PCR detects VBNC cells and offers a lower detection limit, enabling identification of contamination that culture may miss. While PCR can theoretically amplify DNA from non-viable cells, performance metrics meet internationally recognised benchmarks for qPCR.

TP = true positive; FN = false negative; FP = false positive; TN = true negative. Note: Results (TP/FN/FP/TN) are defined relative to the MM698 (culture) method and do not represent absolute presence or absence of *E. coli*.

While PCR specificity was slightly below 100% (table 2), culture-based methods detect only cells capable of growth under laboratory conditions. They may miss viable but non-culturable (VBNC) cells or trace contamination, both of which PCR can identify owing to its direct targeting of DNA.

Although PCR can theoretically amplify DNA from non-viable cells, the strong correlation between PCR and culture counts across spiked samples indicates that interference from extraneous DNA is negligible and does not compromise quantitation. These findings underscore PCR’s reliability as a rapid, sensitive alternative to culture for potable water monitoring.

Reliability in potable water

Performance was assessed exclusively in potable water samples, with only trace amounts of effluent used as a spike source. Results confirmed consistent amplification efficiency and reproducibility, with replicate analyses showing <5% coefficient of variation (CV).

No significant matrix interference was observed.

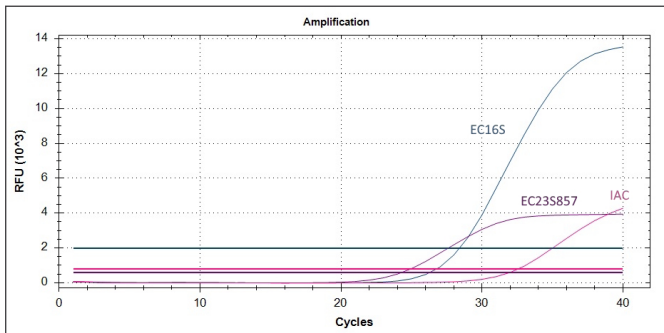
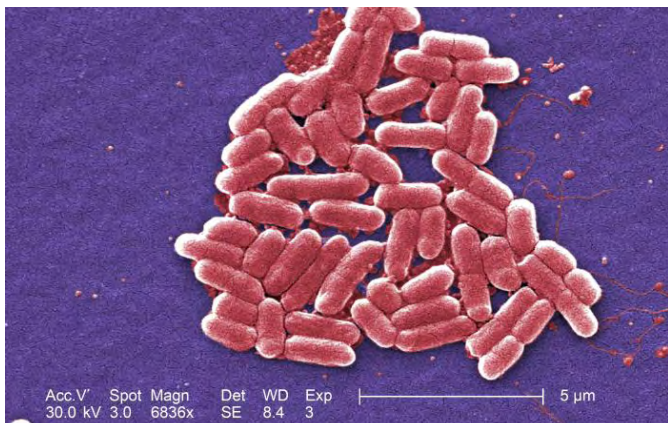


FIGURE 3. Amplification plot for *E. coli* PCR assay targets: EC23S857, EC16S and IAC.



Procedure

Sample concentration

Potable water samples are collected in sterile bottles dosed with sodium thiosulfate, stored at 5 ± 3 °C, and processed within a maximum of 26 hours. A 1 L sample is concentrated by vacuum filtration through a 0.45 µm membrane using aseptic technique.

The membrane is transferred to a bead tube for nucleic acid extraction. Each batch includes a process blank and positive to help verify workflow performance.

Nucleic acid purification and PCR

Total nucleic acid is extracted using the MagMAX™ CORE kit with bead-beating on an automated platform. Extracted eluate is used in a duplex RT-qPCR assay with an internal amplification control (IAC) included to monitor inhibition. Each PCR batch includes standards and a no-template control to ensure quality. A positive detection in the amplification plot (figure 3) is quantified from the standard curve in gene copies per reaction.

Result analysis and reporting

Estimated cfu per 100 mL is calculated from gene copies per reaction using a validated copies-to-cfu conversion factor and sample volume. Results are reported as detected/not detected, alongside quantitative estimates. The method achieves sensitivity consistent with ADWG requirements (1 cfu/100 mL) as outlined by NHMRC and NMMRC (2011).

Regulatory context

The method was developed to meet ADWG requirements for *E. coli* detection, helping ensure sensitivity consistent with potable water safety standards.

The workflow and verification process are NATA accredited for potable water testing, reinforcing ALS’ commitment to accredited, high-quality analytical services.

Key compliance features include:

- Dual-marker design for enhanced inclusivity and sensitivity
- Rigorous QA measures including multi-level process controls and internal controls for robust confidence in results.
- NATA accreditation
- Quantitative reporting with strong correlation to cfu using experimentally verified conversion factors.

Special requirements

Method request

When submitting samples, clearly indicate method code MM336 on the chain of custody. Include any priority turnaround or out-of-hours requirements to ensure correct processing.

Sample submission

Samples are to be received by the ALS Scoresby lab within 20 hours of collection.

For same-day reporting, samples must be received by the ALS Scoresby lab by 6 pm.

ALS can supply a 2L sterile bottle for sample collection.

Parallel analysis

This PCR method is performed in parallel with the standard plate culture method (MM698).

Clients should collect sufficient sample volume to allow both analyses to be completed without compromise.

Out-of-hours reporting

For urgent or time-sensitive results, ALS offers reporting outside standard business hours. To avoid delays, clients must nominate a dedicated contact person on the CoC who will be available to receive data and respond promptly. Out-of-hours rates apply.

Given the critical nature of this method, we recommend contacting ALS' Client Services team by phone immediately after sample dispatch, so appropriate measures can be put in place and all arrangements confirmed.



References

- Gomez Cortes L, Gomez L, Cortes A, Garcia-Aljaro C, Blanch AR (2024) The European trial exercise on *Escherichia coli* detection in bathing waters. Publications Office of the European Union. doi:10.2760/42220.
- Gomez L, Cortes A, Garcia-Aljaro C, Blanch AR (2025) Application of a real-time reverse transcription polymerase chain reaction for rapid detection of *Escherichia coli* in drinking water: an EU representative study. *Environ. Res.*, 279, 121786.
- Haugland R, Aw TG, Briggs S, Dreelin E, Aslan A, Dorevitch S, Shrestha A, Isaacs N, Kinzelman J, Kleinheinz G, Noble R, Rediske R, Scull B, Rosenberg S, Weberman B, Sivy T, Southwell B, Siefiring S, Oshima K, Haugland R (2021) Large-scale comparison of *E. coli* levels determined by culture and a qPCR method (EPA Draft Method C) in Michigan towards the implementation of rapid multi-site beach testing. *J. Microbiol. Methods* 184 106186. doi:10.1016/j.mimet.2021.106186.
- P.H.M. (2002) Quantification of bacteria adherent to gastrointestinal mucosa by real-time PCR. *J. Clin. Microbiol.*, 40(12), 4423–4427. doi:10.1128/JCM.40.12.4423-4427.2002.
- Sivaganesan, M., Aw, T.G., Briggs, S., Dreelin, E., Aslan, A., Dorevitch, S., Shrestha, A., Isaacs, N., Kinzelman, J., Kleinheinz, G., Noble, R., Rediske, R., Scull, B., Rosenberg, S., Weberman, B., Sivy, T., Southwell, B., Siefiring, S., Oshima, K. and Haugland, R. (2019) Standardized data quality acceptance criteria for a rapid *Escherichia coli* qPCR method (Draft Method C) for water quality monitoring at recreational beaches. *Water Res.*, 156, 456–464. doi:10.1016/j.watres.2019.03.011.
- U.S. Environmental Protection Agency (2013) Method 1609: Enterococci in Water by TaqMan® quantitative polymerase chain reaction (qPCR) with internal amplification control (IAC) assay. EPA-820-R-13-005. Washington, D.C.: US EPA Office of Water.
- U.S. Environmental Protection Agency (2012) Method 1611: Enterococci in Water by TaqMan® quantitative polymerase chain reaction (qPCR) assay. EPA-821-R-12-008. Washington, D.C.: US EPA Office of Water.
- NHMRC and NRMCC (2011) Australian Drinking Water Guidelines Paper 6 National Water Quality Management Strategy. National Health and Medical Research Council, National Resource Management Ministerial Council, Commonwealth of Australia, Canberra. ISBN 1864965118.
- National Health and Medical Research Council (2011) *Escherichia coli* | Australian Drinking Water Guidelines Part 5: Microorganisms. National Health and Medical Research Council, Canberra. Available at: <https://guidelines.nhmrc.gov.au/australian-drinking-water-guidelines/part-5/microorganisms/microbial-indicators/escherichia-coli> (Accessed: 12 December 2025).
- State Government of Victoria (2025) Safe Drinking Water Regulations 2025. Statutory Rules 60/2025. Melbourne: State Government of Victoria. Available at: <https://www.legislation.vic.gov.au/as-made/statutory-rules/safe-drinking-water-regulations-2025> (Accessed: 12 December 2025).



Get in touch with us

ALS provides a wide range of specialised testing services covering all stages of your project's life cycle.