

AssetCare Counts #15

July 2012

► Application of Guided Wave Technology (GWT)

Guided Wave Technology (GWT) has been used in industry for a long time. Recent developments in the technology, coupled with operator expertise (gained over many years), has allowed ALS to offer this inspection technique as a screening tool for the inspection of inaccessible areas of piping. These areas include: under insulation to detect corrosion, under pipe support to determine touch point corrosion and in buried piping.

Since the beginning of 2012, the ALS Advanced Inspection team has been performing GWT inspections using the GUL G4 system, operated by an experienced Level II Specialist throughout Australia and across a wide range of industries. GWT is a rapid 'screening' tool, used as a first pass inspection method which, when supported by other techniques, is appropriate to validate the results obtained, and as well as fully understanding the limitations, can deliver a successful and reliable inspection strategy.



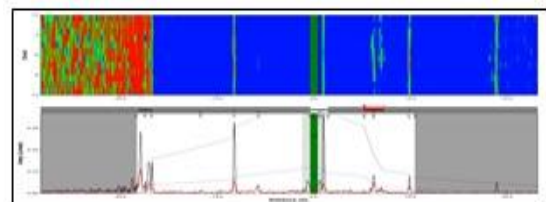
Probe Collar in position



Corrosion Detected - Pre-Blast



Corrosion Detected - Post-Blast



Scan data output, with colour C - scan confirmation

During a recent inspection survey, the ALS Advanced Inspection team was able to detect and quantify corrosion under insulation (CUI), as well as corrosion under pipe supports. The results were confirmed by removing insulation at identified areas, performing visual inspection, as well as ultrasonic and manual pit gauge depth measurements. The benefits to the client were: minimal insulation removal; reduced scaffolding required; larger volumes of piping screened; increased inspection reliability; as well as the benefit of reduced costs generally associated with such inspections.

For further information on GWT inspections, please contact one of the ALS Asset Care offices listed below.

PERTH

109 Bannister Road, Canning Vale WA 6155
Phone: +61 8 9232 0300

BRISBANE

2 Ron Boyle Crescent, Carole Park QLD 4300
Phone +61 7 3718 0300

ADELAIDE

60-62 Gray Terrace, Gillman SA 5013
Phone: +61 8 8240 1299

MELBOURNE

294 Arden Street, North Melbourne VIC 3051
Phone: +61 3 9236 8000

SYDNEY

U 1a & 2, 171-175 Newton Road, Wetherill Park NSW 2164
Phone: +61 2 8786 3100

POWER SERVICES

U 1, 2 Alhambra Avenue, Cardiff NSW 2285
Phone: +61 2 4953 7999