



ALS Webtrieve™ & CoreViewer™

Webtrieve™

Direct secure access to data is available to ALS clients through the online data retrieval system, Webtrieve™, to track and monitor service delivery of analytical tasks and QA/QC information.



CoreViewer™

ALS offers via Webtrieve™ the capability to submit core photos and manage, archive, and plot geochemical and hyperspectral data alongside the photograph.

- Core images rendered into single down-hole and depth registered images;
- View core photos with analytical data;
- Interrogation of analytical anomalies;
- Enables interactive inspections of geotechnical and geological features;
- Long term on-line photo archival; and
- Secure, encrypted Webtrieve™ data system.

Web Tools

Enhanced value provided via a global network connected by industry leading digital tools.

ALS is committed to providing Open Lab™ access to laboratories via an online encrypted account allowing secure data access in real time.

The ALS Open Lab™ policy and this highly integrated business system are unique in the industry and distinguish ALS as the company that delivers unrivalled client solutions.

The consolidated offering of the ALS Global Enterprise Management System (GEMS), CoreViewer™ and Webtrieve™ with 3D orebody software packages such as Leapfrog, Maptek's Vulcan™ and Micromine, set ALS as a clear leader in this space.

ALS is the only laboratory group in the world which can provide this level of integration.



CORE BOX PHOTOS

GEOCHEMICAL DATA

CoreViewer™

Client Code	Project	Grid Hole	Units	From	To	Number of Photos	Associated Analytical Data
QUA	ALS Minerals Test	Demo Hole	m	0	600	74	YAL2021140 LINK
QUA	ALS Minerals Test	H001	m	0	600	74	YAL20217921 LINK
QUA	ALS Minerals Test	H002	m	0	600	74	YAL20217922 LINK
QUA	ALS Minerals Test	H003	m	0	600	74	LINK
QUA	ALS Minerals Test	H004	m	0	600	74	LINK
QUA	Abundance	260	m	0	134.8	94	YAL20214632 LINK



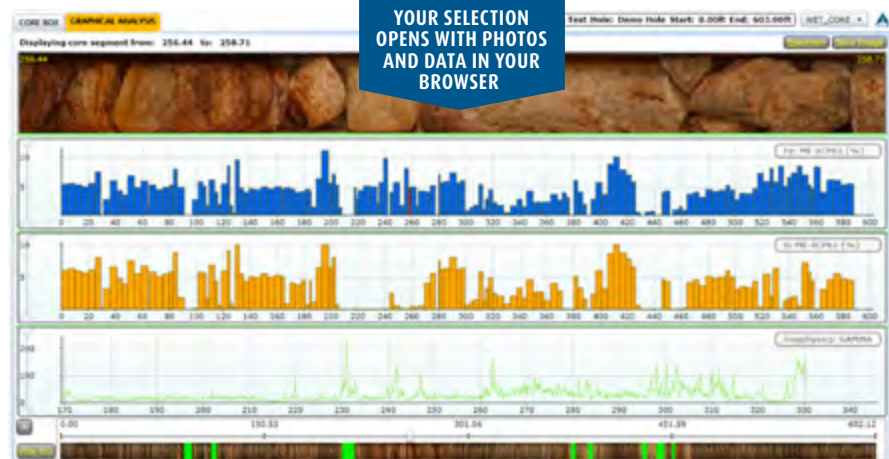
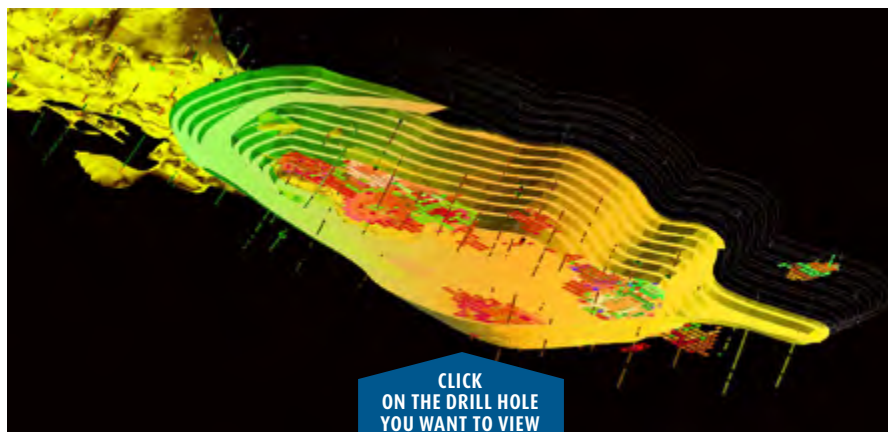
Rapid 3D Ore Model Visualization with Core Data

ALS Webtrieve™ can interface directly with Leapfrog, Maptek's Vulcan™ and Micromine 3D ore model software.

Users of Leapfrog, Maptek's Vulcan™ and Micromine 3D mine planning and geological modeling software can now access core images and geochemistry directly in their 3D geological mode, simply by clicking at any point on a drill hole in the model.

Seamless integration of ALS Webtrieve™ and 3D ore model software offers a user many distinct benefits. The software users can view source information as part of their ore body model, quickly visualize core data in 3D. This speeds interpretation, aids collaboration and provides rapid validation for geological and engineering decisions in the complex mine planning and design process.

This cloud-based technology allows users to securely access stored data remotely where web access is available.



ALS provides a wide range of specialised testing services covering all stages of your project's life cycle.

Please visit alsglobal.com for more information on our services and specialties.



Right Solutions · Right Partner

alsglobal.com

GEOCHEMISTRY CLIENT SERVICES

Australia/Asia — Brisbane

T +61 7 3243 7222

E CSGGBR@alsglobal.com

Australia/Asia — Perth

T +61 8 9347 3222

E CSGPH@alsglobal.com

Africa — Johannesburg

T +27 11 608 0555

E ClientServicesAfrica@alsglobal.com

Brazil — Belo Horizonte

T +55 31 3045 8400

E ALSBH.ClientServMin@alsglobal.com

Canada — Vancouver

T +1 604 984 0221

E ClientServicesWCAN@alsglobal.com

Chile — Santiago

T +56 2 2654 6100

E Santiago.MineralServices@alsglobal.com

Europe — Loughrea

T +353 91 841 741

E ALSM.Loughrea@alsglobal.com

Europe — Seville

T +349 55 981 491

E alssv@alsglobal.com

Mexico — Hermosillo

T +52 662 260 7586

E ClientServicesMEX@alsglobal.com

Peru — Lima

T +51 1 574 57 00

E ServicioAlClientePeru@ALSGlobal.com

Ecuador-Quito

T: +593 2 513 0891

E: ALSEcuadorMin@ALSGlobal.com

USA — Reno

T +1 775 356 5395

E ClientServicesUSA@alsglobal.com